

Zermatt Hotel

Zermatt, Switzerland 2007-2009

Luxury 5+ star hotel in a spectacular mountain setting

Architect	Matteo Thun & Partners
Client	Chesa Inverna Properties
Area	5,000 m ²
Cost	€50 million
Structural Engineer	Mooser, Lauber, Stucky Architekturbüro
Services Engineer	Mooser, Lauber, Stucky Architekturbüro
Project Stages	Inception to Planning Permission

Tom Lacey led the design of this prestigious hotel for Chesa Inverna when in charge of the architectural department of Matteo Thun & Partners in Milan.

The concept of this 9-storey hotel is that of a 'vertical village'. Main functions are expressed vertically in three separate volumes: public functions at the lower levels; standard suites in the middle and penthouse units at the top. These volumes are progressively set back to follow the profile of the mountain slope in which they are set.

This strong concept is reinforced by a linear one-sided plan designed to provide uninterrupted views towards the Matterhorn Mountain from all habitable rooms of the hotel.

The building borrows its morphology and materiality from local traditions by using locally sourced stone and wood in its construction. The scale into which the vertical elements are broken down refers to that of local dwellings.



- 1 - The building is expressed as a series of volumes arranged as a 'vertical village'
 - 2 - The tri-part organisation reinforces the natural slope of the mountain into which the building is set
 - 3 - Lobby and bar areas are luxurious yet cosy and warm
 - 4, 5 - All guest rooms - both standard and penthouse suites have views of the Matterhorn Mountain
- 1, 2, 3, 4, 5 - © Copyright Matteo Thun & Partners



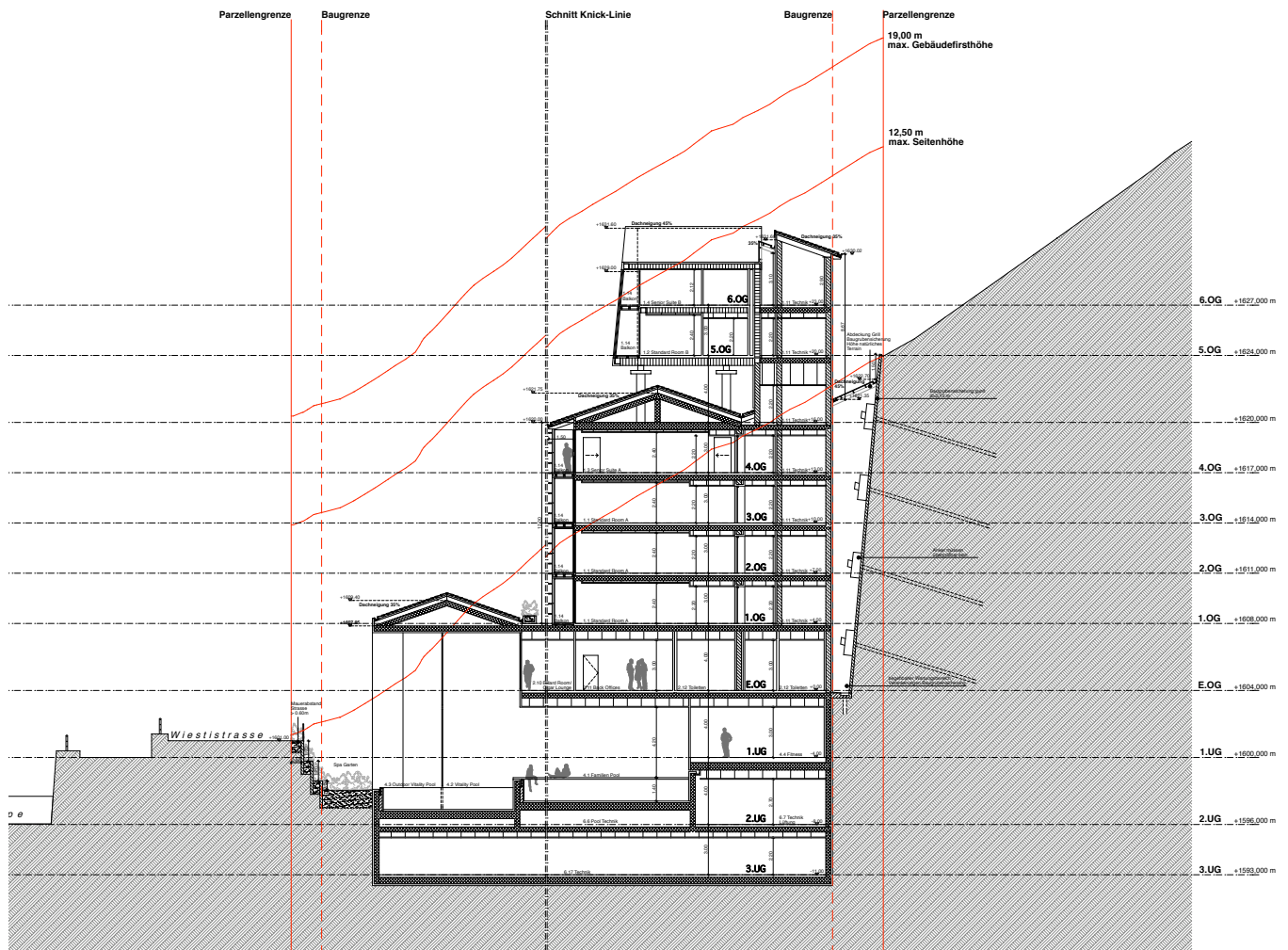
5



4



3



2

