

Wimbledon mixed double

Former Rogers duo's first project arranges family homes around decks-and-cabins boat theme

LONDON Emerging practice Lacey & Saltykov Architects has completed its first project: two semi-detached family homes in south-west London.

The firm was set up last year by Tom Lacey and Andrei Saltykov, who met while working at Richard Rogers Partnership, now Rogers Stirk Harbour + Partners, although the duo began working on the housing project in Dawlish Avenue, Wimbledon Park, in 2009.

According to the pair, the

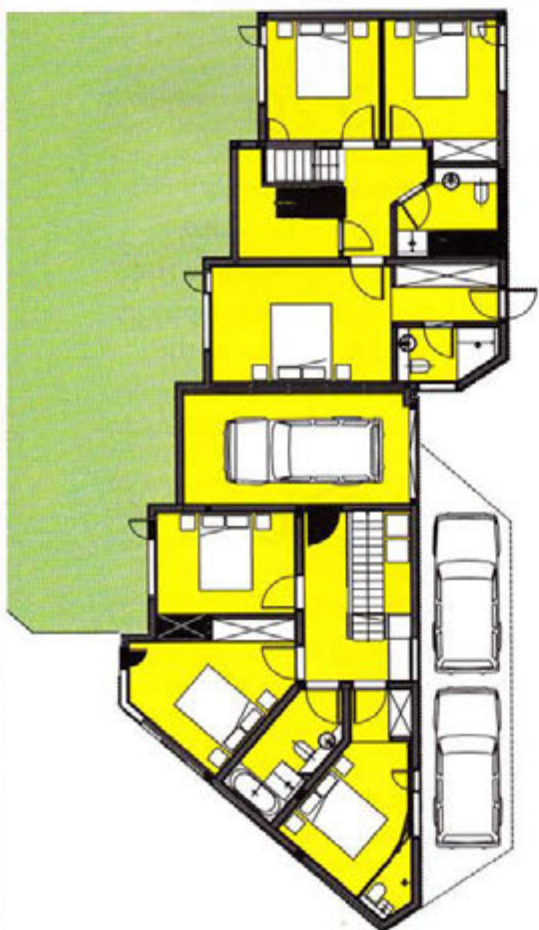
£750,000 scheme was inspired by the layout of a boat, with the living areas 'floating above the sea-level gardens like elevated decks', with views out towards the park and the cabin-like bedrooms arranged 'below deck'.

The awkwardly-shaped site had been used as a dump and had a chequered planning history before the practice won the go-ahead for the 300m², timber-framed development in 2009. *Richard Waite*

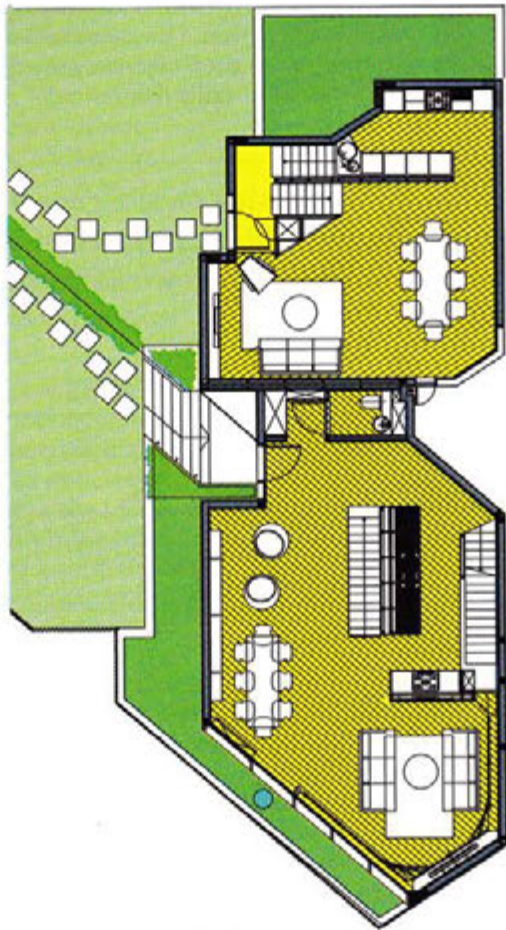


ALL IMAGES: WILL PRYCE

This page Upper ground floor living space
Opposite View from south-west



Lower ground floor



Upper ground floor



First floor



