

# BOBBY'S PLAYHOUSE

Fulham, London, UK 2013

Flying box

**Architect** Lacey & Saltykov  
**Client** Bobby's Playhouse  
**Area** 100 m<sup>2</sup>  
**Cost** Confidential  
**Project Stages** Concept and Pre-application

This private day-care nursery for under-fives in Fulham, London, had outgrown its space, requiring more playspace for up to 16 children. Taking a whole-scale and long-term view of the problem, the architects drew up a scheme that could accommodate 32 pupils, and would better define the main entrance to the building.

Initially, space was freed up by reordering the rooms – an office was moved to beneath the stairs, creating more playroom space in the room above. Then a striking prefabricated box was installed at the front of the building,

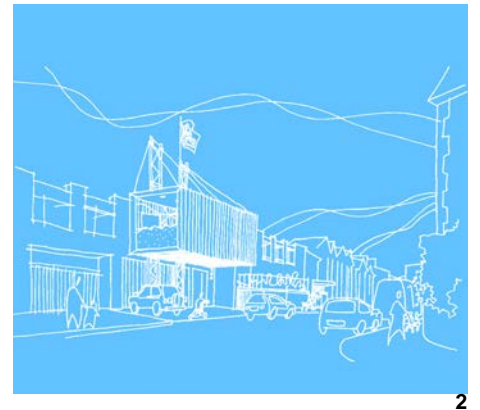
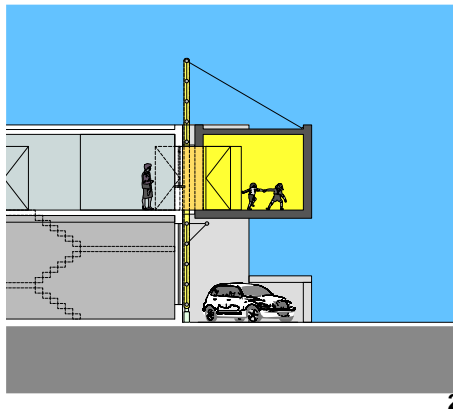
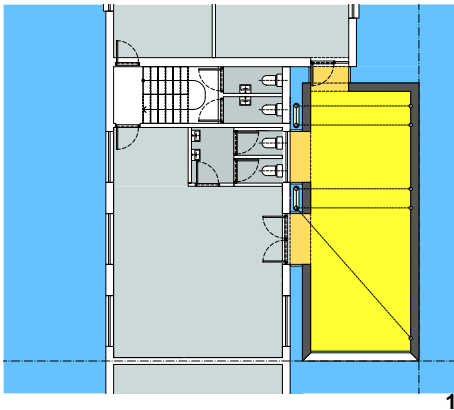
connecting with the playrooms on the upper floor while preserving the rights of way and allowing cars to access the unit below it.

Playful and tactile, the brightly coloured structure signaled the main entrance of the building and boosted the nursery's presence in the neighbourhood.

- 1 - Typical Floor Plan
- 2 - Typical Section
- 3 - Concept Sketch
- 4 - Concept Photograph
- 5 - Photomontage

1-3/5 © 2014 Copyright Lacey & Saltykov

4 © 2014 Copyright J G Morad





**b** Bobby's  
info@bobbys