

K & T HOUSE

Connaught Square, London, UK 2013 - 2014
Glass guesthouse

Architect Lacey & Saltykov
Client Private
Area 150 m²
Cost Confidential
Project Stages Inception to Tender (current)

When one design solution can be applied throughout, it efficiently brings coherence to chaos. The owners of a Grade-II listed building in Westminster, London, wanted a new addition to the building: a space for guests that was independent from, yet connected to, the main house.

The response is a scheme that demolishes an old part of the house so as to create a new three-story guesthouse comprising glass walls and bridges (on the ground and first floors) that flood the rooms with light. The accommodation

includes identical en-suite bedrooms with walk-in wardrobes on the two lower floors with conservatory and terrace above.

Neatly connecting with the old house, the glass walls and floors are contained within identical interlocking steel frames of uniform dimensions. Systematic modular construction – the use throughout of a framework capable of holding floors and ceilings of differing materials – makes for a sense of unity and an efficient build.

- 1 - Concept Section
- 2 - Photograph of the front of the house
- 3 - Photograph of the rear courtyard
- 4 - Concept diagram
- 5 - Sketch view from above the courtyard of the proposed scheme

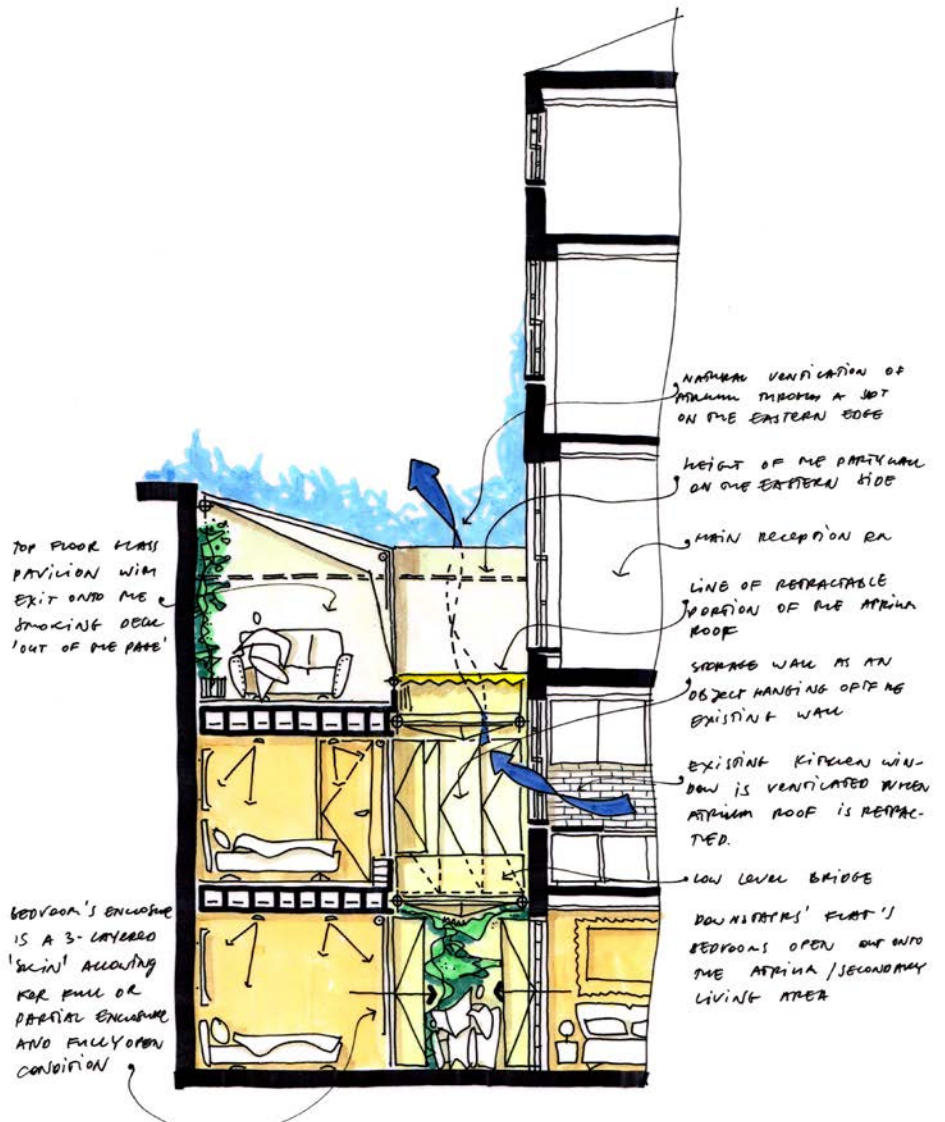
1-5 © 2014 Copyright Lacey & Saltykov

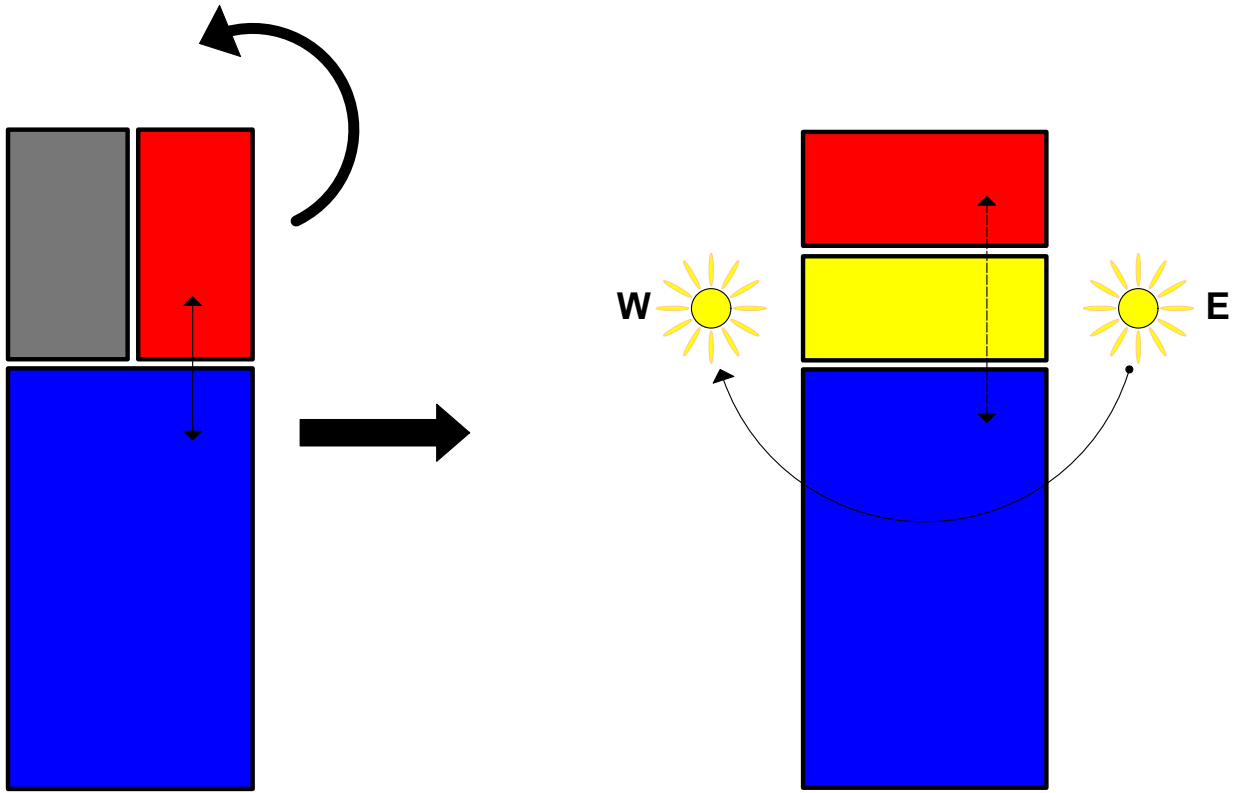


1



2





4

