

PICTON TOWERS

City of London, UK 2013 - 2014

100m tall tower in the heart of London's financial district

Architect	Lacey & Saltykov
Client	Confidential
Area	40,000 m ²
Cost	Confidential
Planning Consultant	Turley
Project Stages	Concept and Pre-application

This complex constrained site incorporating an existing 1950s office building, is transformed into a multi-functional complex, comprising three distinct yet connected angular blocks that rise like stepping stones so as to offer office space with hotel accommodation above.

At street level, the opening between each block acts as a naturally magnetic entrance point, drawing visitors in via boulevard-like public spaces. Lifts and stairwells are located between the floor plates, connecting them while maximising floor space and ensuring the fastest

possible access to all levels of the building.

The scheme promotes ease of communication and clear understanding within the workplace: an atrium that connects all three office blocks offers a visual connection with the floors above, stairwells are open and work spaces feature breakout areas. Each block has its own communal space, including a roof terrace and a rooftop spa, swimming pool and gym with panoramic views. Located in the a 25-storey tower – the tallest of the three blocks – the hotel offers panoramic views of the City.

1 - Typical office level plan (low-rise)

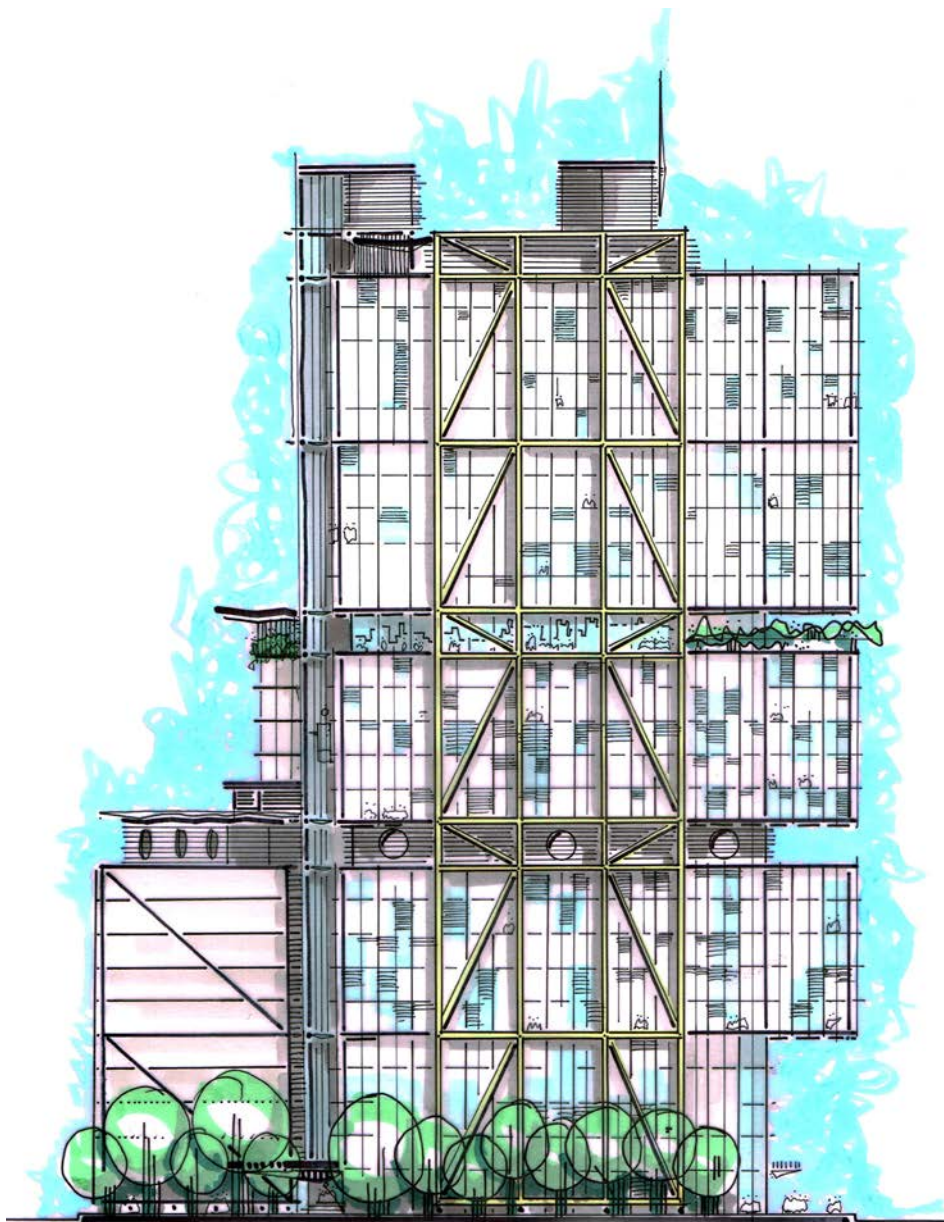
2 - Hotel lobby, bar and spa level (mid-rise)

3 - Typical hotel level plan (high-rise)

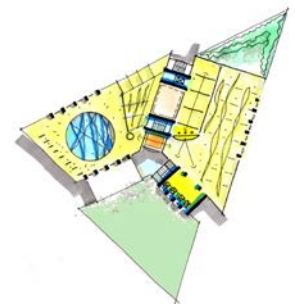
4 - East elevation

5 - View of the main approach to the building from the south

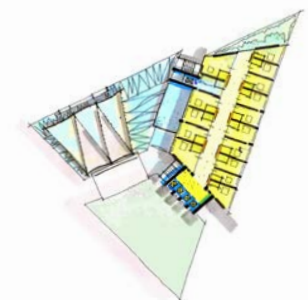
1-4 © 2014 Copyright Lacey & Saltykov
5 © 2014 Copyright 7-T



1



2



3

