

WIMBLEDON COLLEGE OF ART

Merton Hall Road, London, UK 2014

Small sails

Architect	Lacey & Saltykov
Client	University of the Arts London
Area	500 m ²
Cost	£1,200,000
Planning Consultant	Turley
Project Stages	Invited Competition

This limited competition was to create new studio space on Wimbledon College's Merton Hall Site to replace existing off site facilities.

Given the nature of the corner location for the studios they were to be connected to the rest of the college externally.

The 'kite' shaped series of small sails was a response both to that brief and extending it to create a new iconic architectural image for the college as a whole. Visible from the street and the main entrance to the college, they draw

people to the new spaces.

They have 2 further functions; to knit-together the somewhat disparate collection of buildings that are located in the corner of the site and providing much needed covered space for students to work on large scale sculptures and installations externally.

Although unsuccessful in this completion, coming in second, Lacey & Saltykov have recently won a place on the UAL framework as one of their preferred architects.

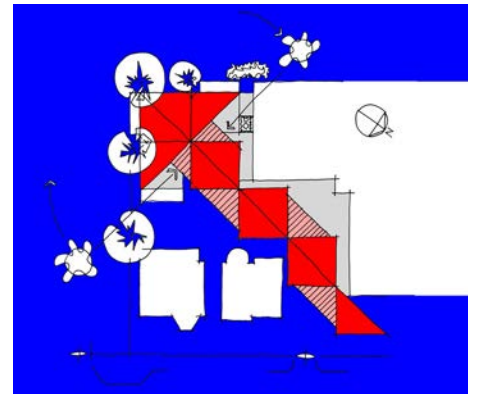
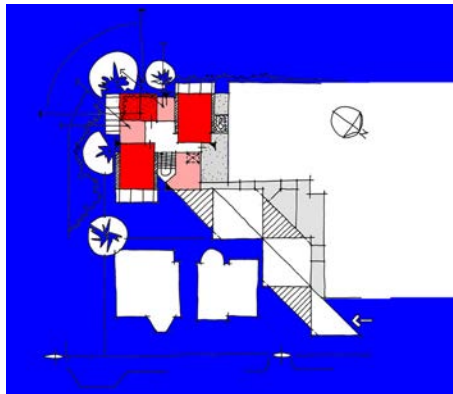
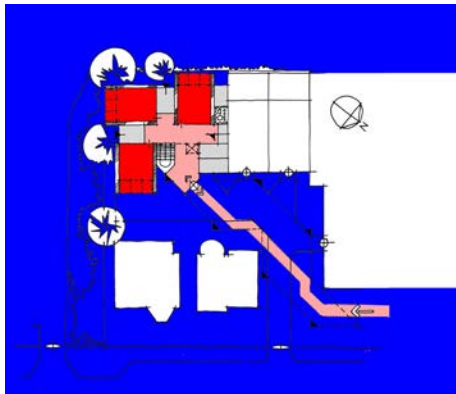
1 - Plans

2 - Longitudinal section

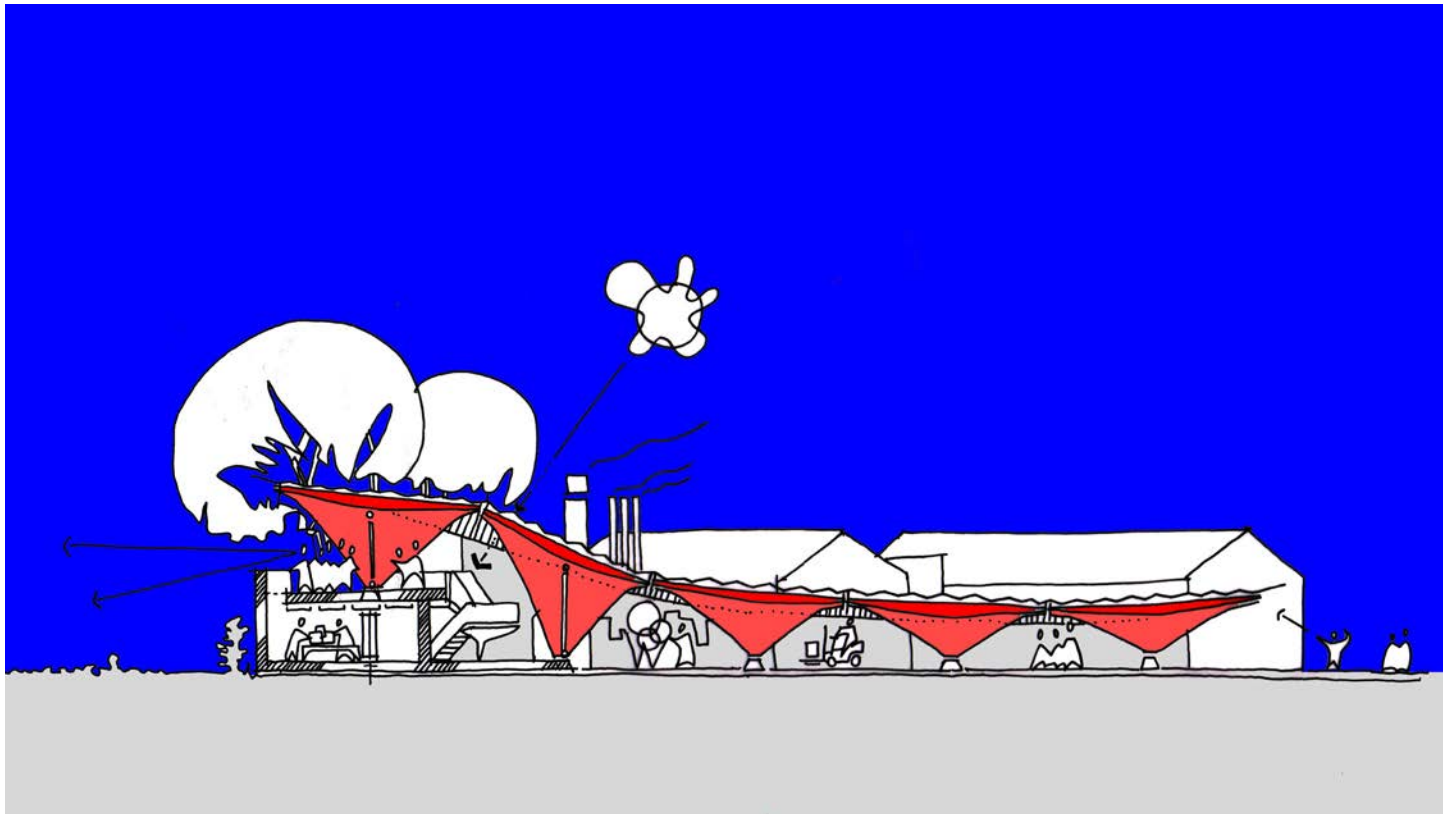
3 - Site analysis diagram

4 - 3D Sketch

1-4 © 2014 Copyright Lacey & Saltykov



1

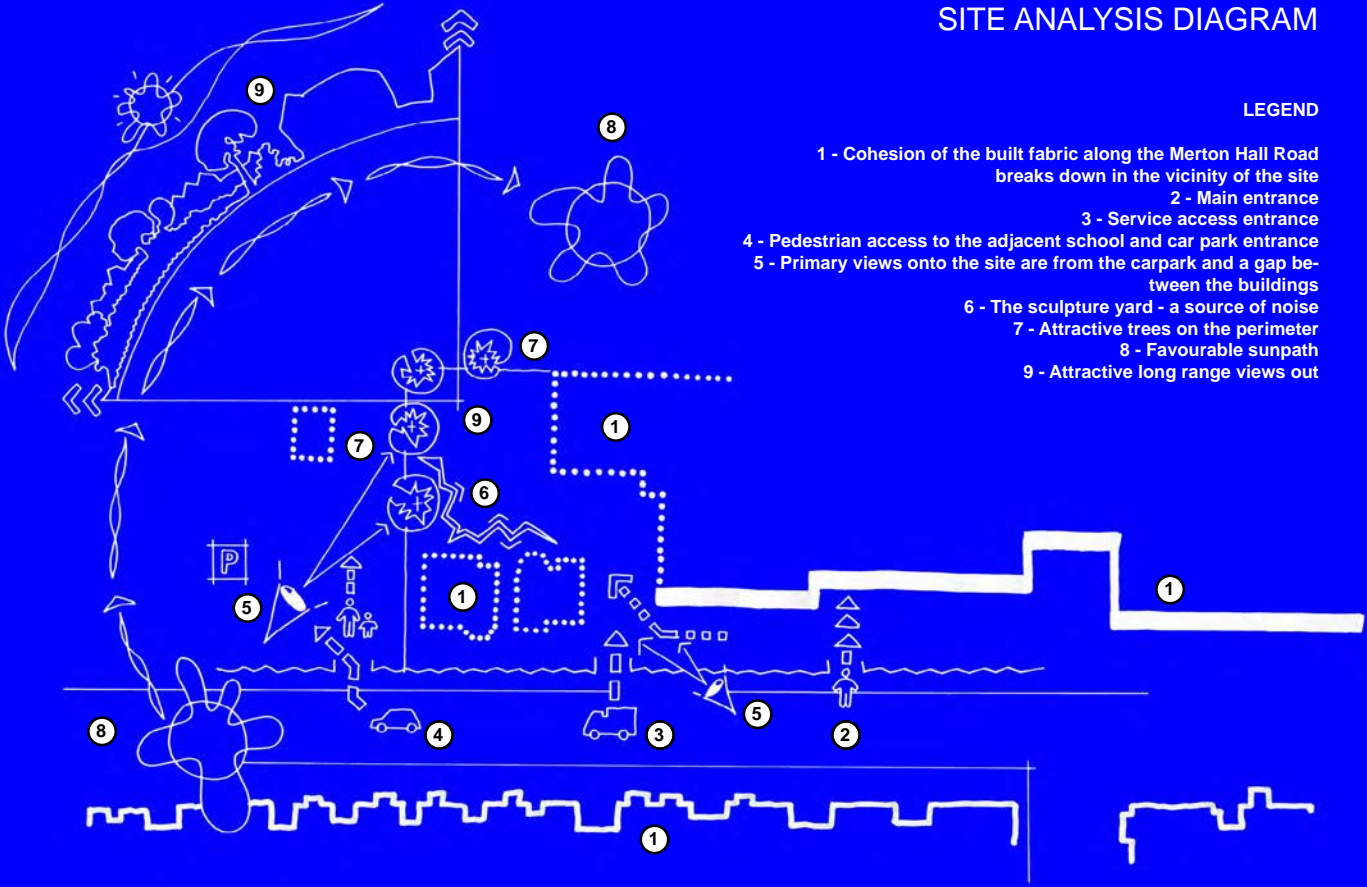


2

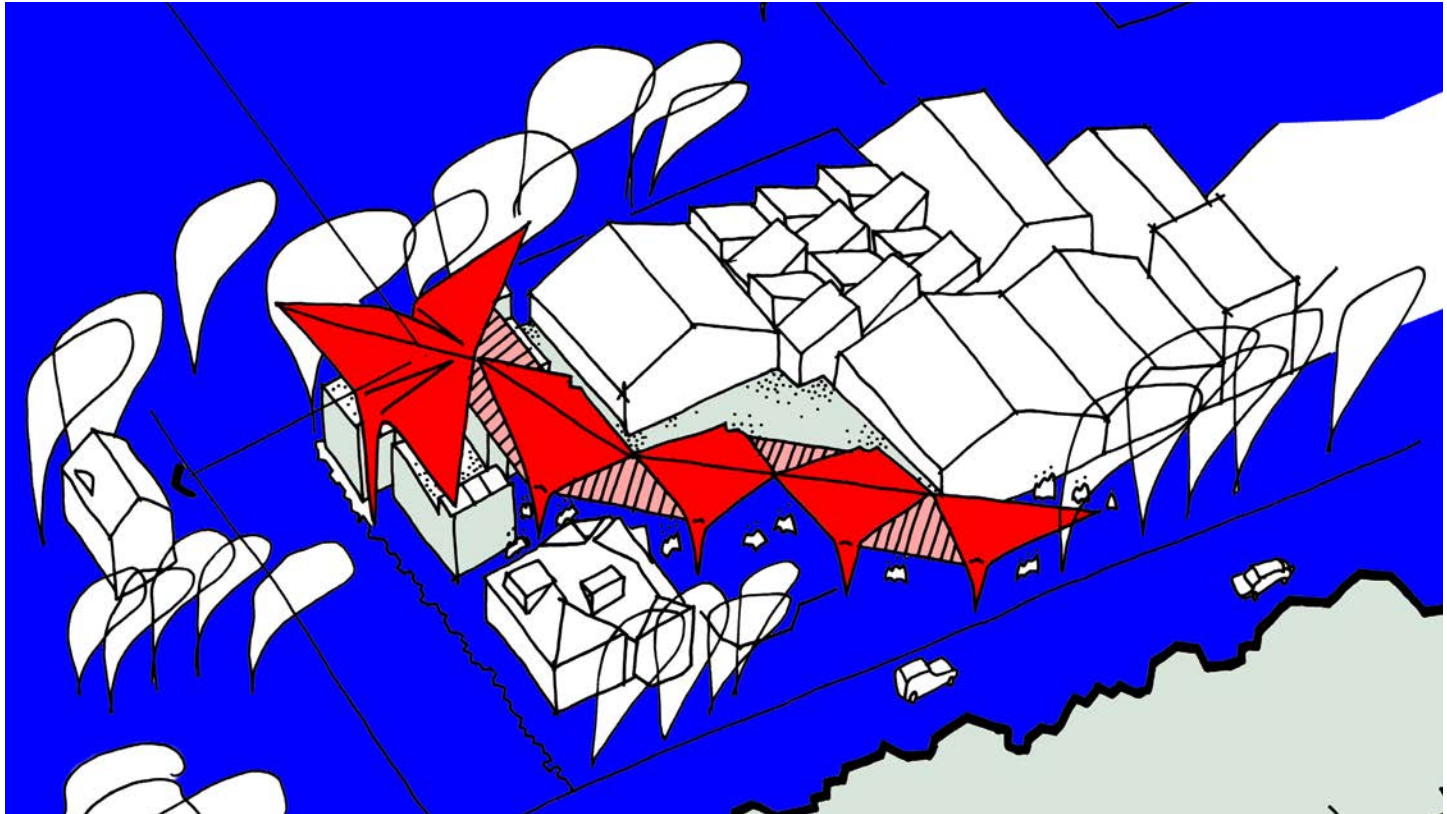
SITE ANALYSIS DIAGRAM

LEGEND

- 1 - Cohesion of the built fabric along the Merton Hall Road breaks down in the vicinity of the site
- 2 - Main entrance
- 3 - Service access entrance
- 4 - Pedestrian access to the adjacent school and car park entrance
- 5 - Primary views onto the site are from the carpark and a gap between the buildings
- 6 - The sculpture yard - a source of noise
- 7 - Attractive trees on the perimeter
- 8 - Favourable sunpath
- 9 - Attractive long range views out



3



4